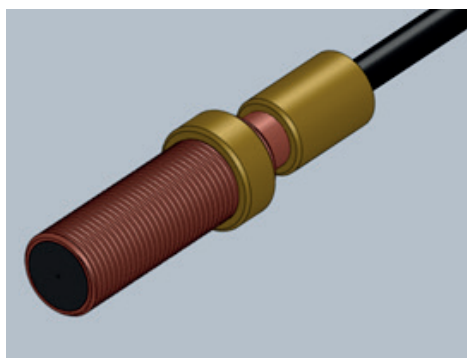
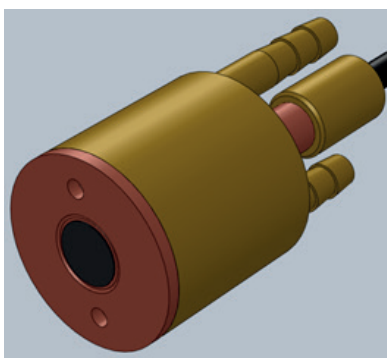


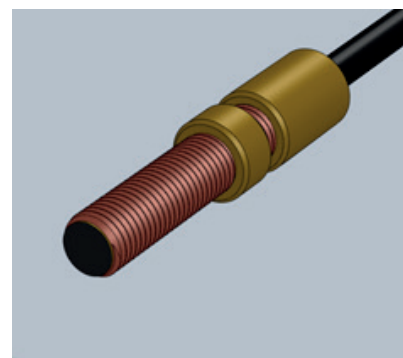
DRTP-15 Heat flux sensors



DRTP -15/10



DRTP-15/10 sensor assembly with water-cooled radiator



DRTP -15/7

DESIGNED FOR

use as a measuring instrument for measuring the density of radiation heat flux in various industries and during research.

The range of measured heat flux densities is	from 1 to 2500 kW/m ²
Cable length	from 1,5 to 5 metres
Two types of sensors are produced	DRTP -15/7 with connecting thread M8 step 1 DRTP -15/10 with connecting thread M12 step 1
Limits of permissible error in measuring the heat flux density	±5 %
Sensor time constant	not more than 5 seconds
Water cooled radiator	is ordered as an option